



Pool Care Thailand ASIA

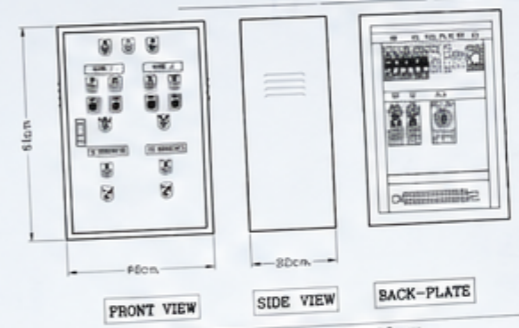
TOTAL POOL SOLUTIONS

ครบทุกโซลูชัน ดูแลสระว่ายน้ำอย่างมืออาชีพ

POWER SUPPLY 380V 50Hz.
TO HOB 3kW/0.04A*
(15Amp) 641C-4 mm² 0-2.5 mm² THW



LAYOUT PANEL



MANUFACTURING NOTES		UNIT
CONTROL PANEL	(WP-187) 380V	1
PHASE PROTECTOR	WIP 0001 380V 0	1
CB	MEKLONG 380V/50HZ 100A 3P+N+PE	2
DS	MEKLONG 380V/50HZ 100A 3P+N+PE	2
FUSE P-R-57	MEKLONG 380V/50HZ 100A 3P+N+PE	2
FUSE SMITH (TFS-1)	MEKLONG 380V/50HZ 100A 3P+N+PE	2
MAGNETIC CONTACTOR	MEKLONG 380V/50HZ 100A 3P+N+PE	2
OVERLOAD RELAY	MEKLONG 380V/50HZ 100A 3P+N+PE	2
24-100A TIMER (TS-1)	MEKLONG 380V/50HZ 100A 3P+N+PE	2
PILOT LAMP 220 Vac	MEKLONG 380V/50HZ 100A 3P+N+PE	2
PILOT LAMP 220 Vac	MEKLONG 380V/50HZ 100A 3P+N+PE	2
PILOT LAMP 220 Vac	MEKLONG 380V/50HZ 100A 3P+N+PE	2
PILOT LAMP 220 Vac	MEKLONG 380V/50HZ 100A 3P+N+PE	2
PILOT LAMP 220 Vac	MEKLONG 380V/50HZ 100A 3P+N+PE	2
PILOT LAMP 220 Vac	MEKLONG 380V/50HZ 100A 3P+N+PE	2



SWIMMING POOL
SYSTEM DESIGN



BUILD
RENOVATE



RESIDENTIAL AND
COMMERCIAL SYSTEM
INSTALLATION



RETAIL & WHOLE
PRODUCT



CLEANING &
MAINTENANCE



Contact

www.poolcarethailand.com



Call

Alice 095-285-55-33



Email

Contact.poolcarethailand@gmail.com



SCAN ME



PROFESSIONAL
ทีมงานมืออาชีพ



RELIABLE
เชื่อถือได้



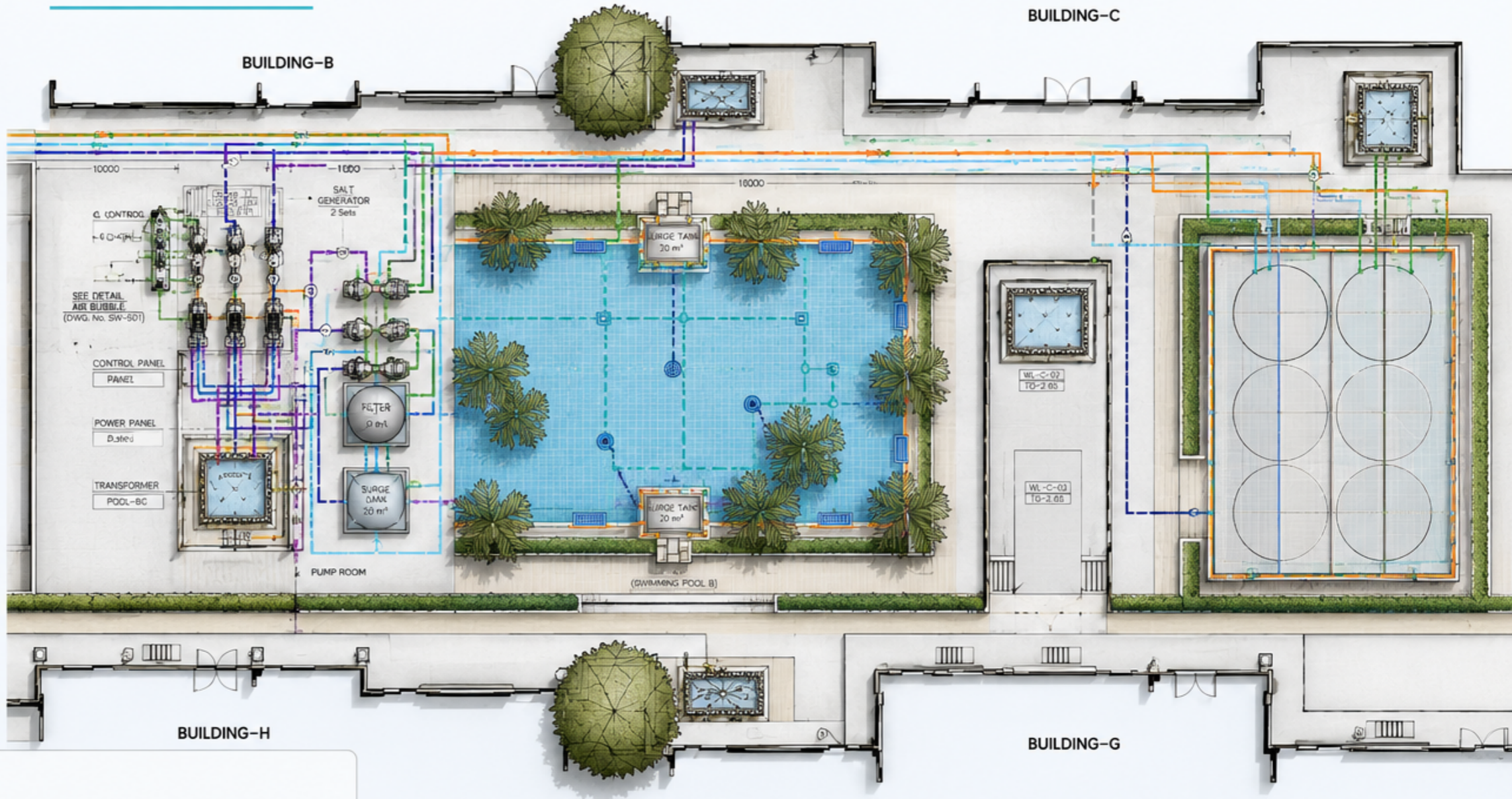
INNOVATIVE
ใส่ใจทุกการพัฒนา



QUALITY
มาตรฐานระดับสากล

FLOW DIAGRAM

SOCIAL POOL B,C



LEGEND

- WATER SUPPLY LINE
- - - MAIN DRAIN LINE
- - - FLOOR INLET LINE
- - - VACUUM LINE
- - - OVER FLOW LINE
- - - GUTTER TO TANK LINE
- - - SURGE TANK LINE
- - - BALANCE LINE

SYMBOLS

-  FLOOR INLET
-  MAIN DRAIN
-  SKIMMER / GUTTER
-  SURGE TANK
-  PUMP
-  FILTER
-  CHECK VALVE
-  BALL VALVE
-  BUTTERFLY VALVE

NOTES

- ALL PIPE SIZES ARE IN INCHES (∅).
- ALL VALVES SHALL BE INSTALLED FOR EASY OPERATION AND MAINTENANCE.
- THIS DRAWING IS DIAGRAMMATIC. REFER TO DETAILED DRAWINGS FOR CONSTRUCTION.
- ALL EQUIPMENT SHALL BE INSTALLED IN ACCORDANCE WITH MANUFACTURER'S RECOMMENDATIONS.

PUMP ROOM LAYOUT

PROFESSIONAL POOL SYSTEM SOLUTIONS



EFFICIENCY

High performance system design for optimal water circulation and energy savings.



RELIABILITY

Premium equipment and quality materials for long-term performance.



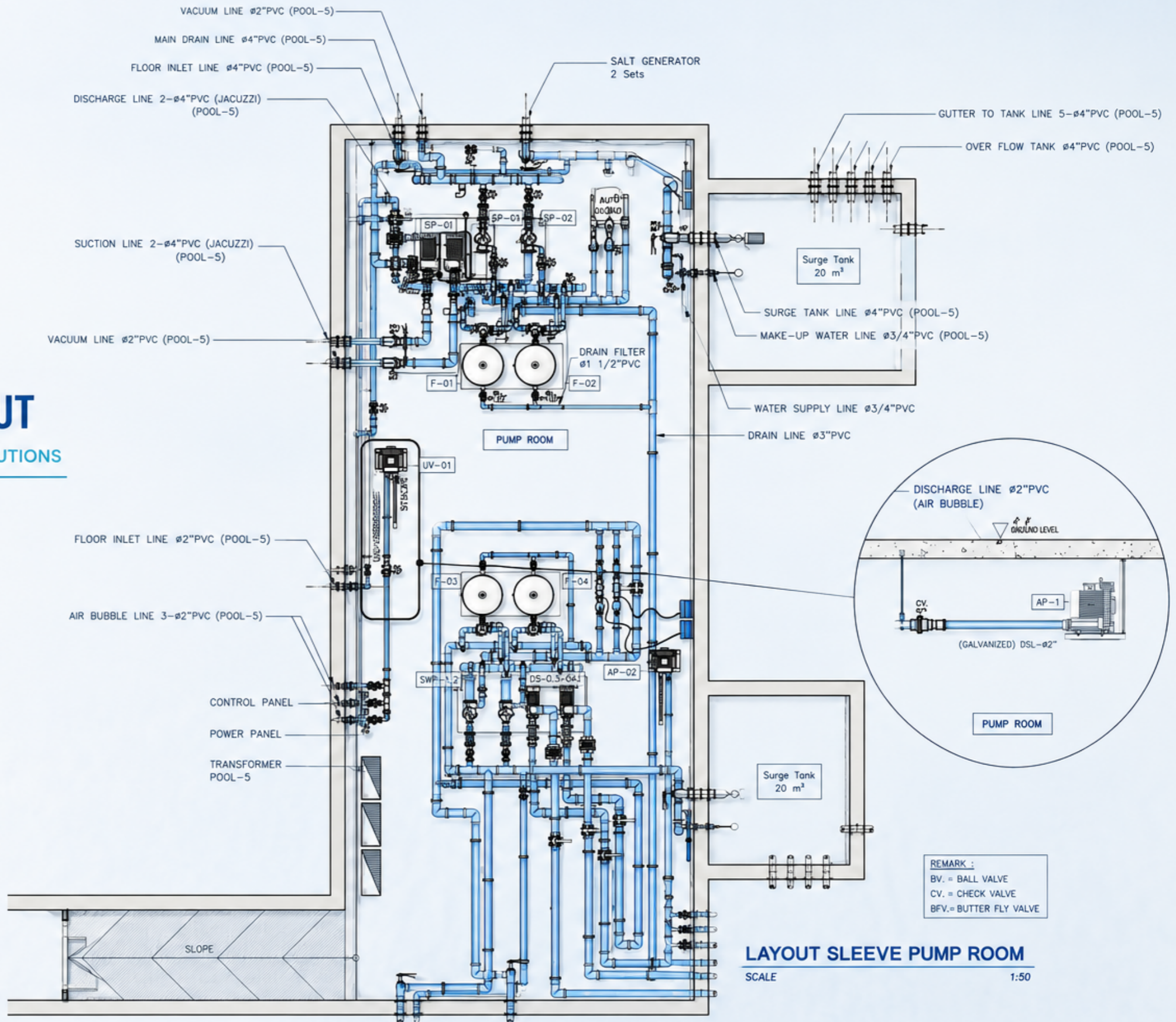
SAFETY

Engineered for safe operation with precise control and leak prevention.



MAINTENANCE

Easy access design for convenient inspection and maintenance.





PAVARA

KHIRI COLLECTION



Pool Care Thailand

Pool Care (Thailand) Co., Ltd.
195/7 Moo 1, Tumbon Rowai,
Amphoe Mueang Phuket,
Phuket 83130, Thailand
Tel : +66 (0) 76 123 456
Fax : +66 (0) 76 123 457
Email : info@poolcarethailand.com
www.poolcarethailand.com

PROJECT :
PRIVATE RESIDENCE

LOCATION :
PHUKET, THAILAND

DRAWING TITLE :
SWIMMING POOL SYSTEM
DIAGRAM & PLAN

SCALE :
AS SHOWN

DATE :
18-08-2023

DESIGNED BY :
POOL CARE THAILAND

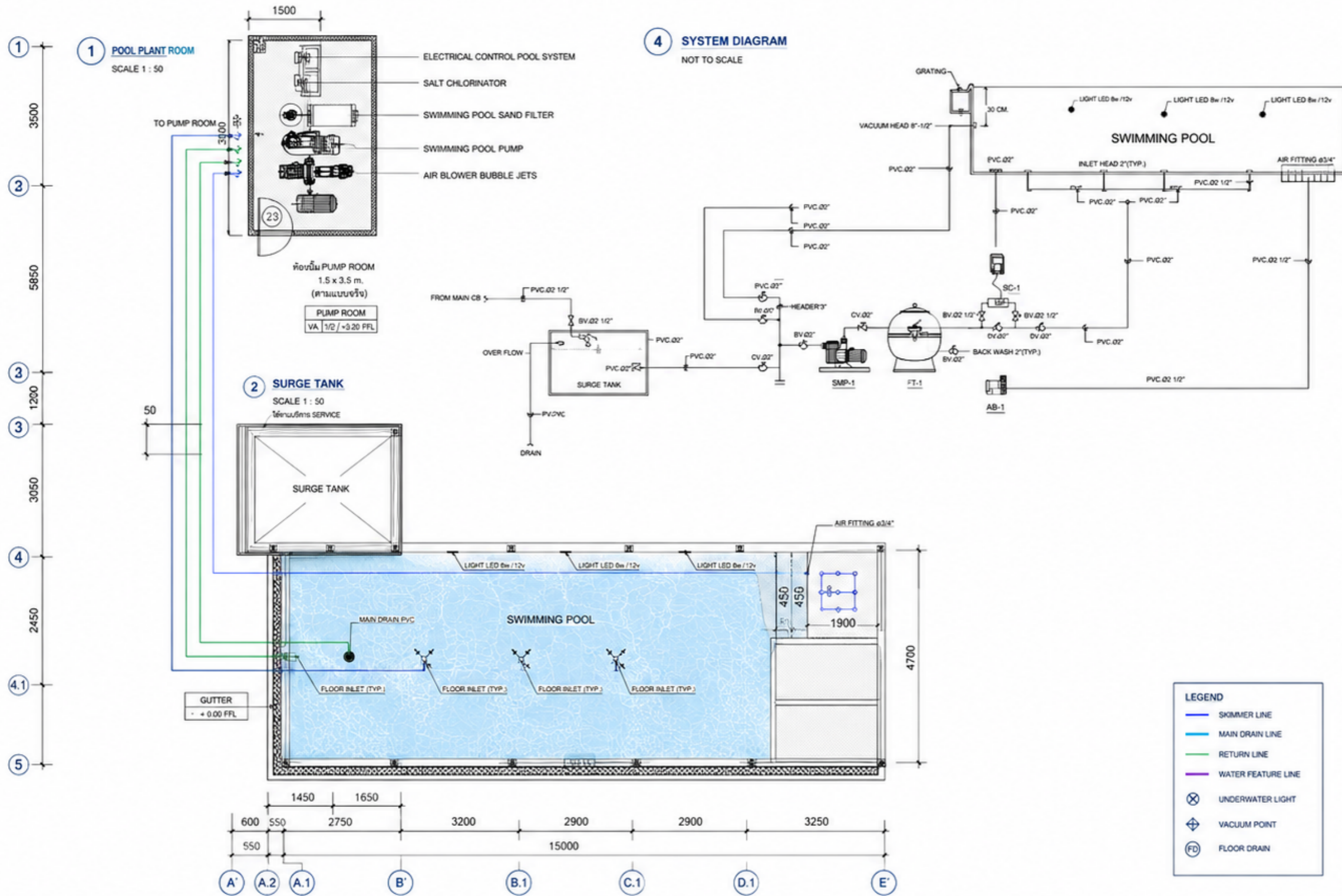
DRAWN BY :
PCT ENGINEER

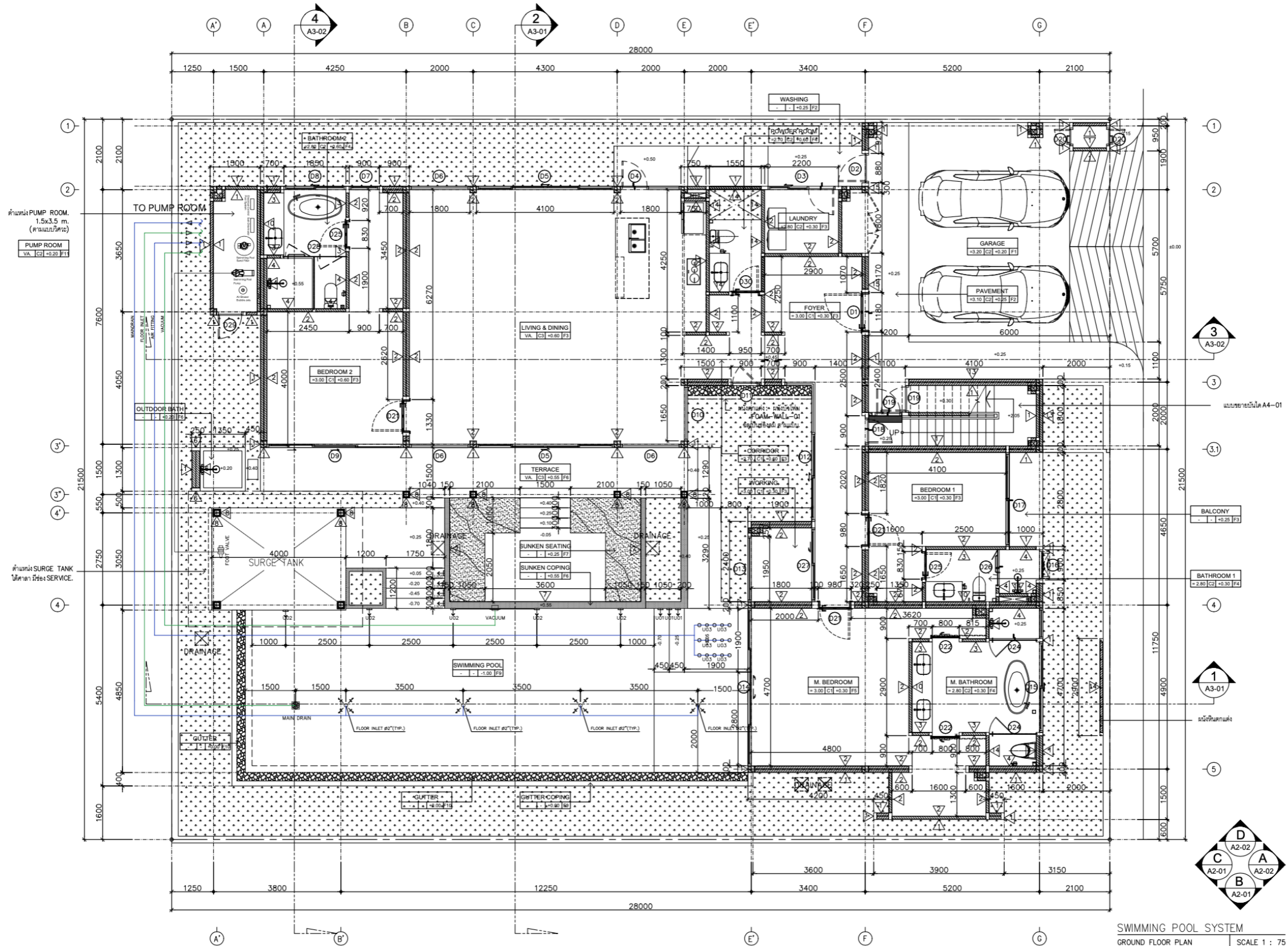
CHECKED BY :
PCT MANAGER

APPROVED BY :
PCT MANAGER

DRAWING NO. :
PC-PP-01

REVISION :
A





3
A3-02

แผนขยายพื้นที่ A4-01

3.1

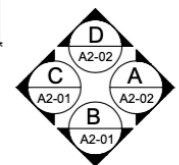
BALCONY
- 1 - | +0.25 | F3

BATHROOM 1
- 2.80 | C2 | +0.30 | F4

1
A3-01

ผนังหินแกรนิต

5



SWIMMING POOL SYSTEM
GROUND FLOOR PLAN
SCALE 1 : 75

NO.	REVISION	DATE
1	แก้ไข ผนัง	31/08/2023
2	แก้ไข ผนัง	31/08/2023
3	แก้ไข ผนัง	31/08/2023
4	แก้ไข ผนัง	31/08/2023
5	แก้ไข ผนัง	31/08/2023
6	แก้ไข ผนัง	31/08/2023
7	แก้ไข ผนัง	31/08/2023
8	แก้ไข ผนัง	31/08/2023
9	แก้ไข ผนัง	31/08/2023
10	แก้ไข ผนัง	31/08/2023
11	แก้ไข ผนัง	31/08/2023
12	แก้ไข ผนัง	31/08/2023
13	แก้ไข ผนัง	31/08/2023
14	แก้ไข ผนัง	31/08/2023
15	แก้ไข ผนัง	31/08/2023
16	แก้ไข ผนัง	31/08/2023
17	แก้ไข ผนัง	31/08/2023
18	แก้ไข ผนัง	31/08/2023
19	แก้ไข ผนัง	31/08/2023
20	แก้ไข ผนัง	31/08/2023
21	แก้ไข ผนัง	31/08/2023
22	แก้ไข ผนัง	31/08/2023
23	แก้ไข ผนัง	31/08/2023
24	แก้ไข ผนัง	31/08/2023
25	แก้ไข ผนัง	31/08/2023
26	แก้ไข ผนัง	31/08/2023
27	แก้ไข ผนัง	31/08/2023
28	แก้ไข ผนัง	31/08/2023
29	แก้ไข ผนัง	31/08/2023
30	แก้ไข ผนัง	31/08/2023
31	แก้ไข ผนัง	31/08/2023
32	แก้ไข ผนัง	31/08/2023
33	แก้ไข ผนัง	31/08/2023
34	แก้ไข ผนัง	31/08/2023
35	แก้ไข ผนัง	31/08/2023
36	แก้ไข ผนัง	31/08/2023
37	แก้ไข ผนัง	31/08/2023
38	แก้ไข ผนัง	31/08/2023
39	แก้ไข ผนัง	31/08/2023
40	แก้ไข ผนัง	31/08/2023
41	แก้ไข ผนัง	31/08/2023
42	แก้ไข ผนัง	31/08/2023
43	แก้ไข ผนัง	31/08/2023
44	แก้ไข ผนัง	31/08/2023
45	แก้ไข ผนัง	31/08/2023
46	แก้ไข ผนัง	31/08/2023
47	แก้ไข ผนัง	31/08/2023
48	แก้ไข ผนัง	31/08/2023
49	แก้ไข ผนัง	31/08/2023
50	แก้ไข ผนัง	31/08/2023
51	แก้ไข ผนัง	31/08/2023
52	แก้ไข ผนัง	31/08/2023
53	แก้ไข ผนัง	31/08/2023
54	แก้ไข ผนัง	31/08/2023
55	แก้ไข ผนัง	31/08/2023
56	แก้ไข ผนัง	31/08/2023
57	แก้ไข ผนัง	31/08/2023
58	แก้ไข ผนัง	31/08/2023
59	แก้ไข ผนัง	31/08/2023
60	แก้ไข ผนัง	31/08/2023
61	แก้ไข ผนัง	31/08/2023
62	แก้ไข ผนัง	31/08/2023
63	แก้ไข ผนัง	31/08/2023
64	แก้ไข ผนัง	31/08/2023
65	แก้ไข ผนัง	31/08/2023
66	แก้ไข ผนัง	31/08/2023
67	แก้ไข ผนัง	31/08/2023
68	แก้ไข ผนัง	31/08/2023
69	แก้ไข ผนัง	31/08/2023
70	แก้ไข ผนัง	31/08/2023
71	แก้ไข ผนัง	31/08/2023
72	แก้ไข ผนัง	31/08/2023
73	แก้ไข ผนัง	31/08/2023
74	แก้ไข ผนัง	31/08/2023
75	แก้ไข ผนัง	31/08/2023
76	แก้ไข ผนัง	31/08/2023
77	แก้ไข ผนัง	31/08/2023
78	แก้ไข ผนัง	31/08/2023
79	แก้ไข ผนัง	31/08/2023
80	แก้ไข ผนัง	31/08/2023
81	แก้ไข ผนัง	31/08/2023
82	แก้ไข ผนัง	31/08/2023
83	แก้ไข ผนัง	31/08/2023
84	แก้ไข ผนัง	31/08/2023
85	แก้ไข ผนัง	31/08/2023
86	แก้ไข ผนัง	31/08/2023
87	แก้ไข ผนัง	31/08/2023
88	แก้ไข ผนัง	31/08/2023
89	แก้ไข ผนัง	31/08/2023
90	แก้ไข ผนัง	31/08/2023
91	แก้ไข ผนัง	31/08/2023
92	แก้ไข ผนัง	31/08/2023
93	แก้ไข ผนัง	31/08/2023
94	แก้ไข ผนัง	31/08/2023
95	แก้ไข ผนัง	31/08/2023
96	แก้ไข ผนัง	31/08/2023
97	แก้ไข ผนัง	31/08/2023
98	แก้ไข ผนัง	31/08/2023
99	แก้ไข ผนัง	31/08/2023
100	แก้ไข ผนัง	31/08/2023

ผู้ส่งตรวจหน้า

NO. / DATE: 31-08-2023 FOR SUBMISSION

SCALE: 1 : 75

PROJECT: A 1-01

REVISION: A

1. THE DRAWING AND ALL DESIGN THEREIN ARE THE SOLE PROPERTY OF PAVARA AND WILL BE USED STRICTLY ACCORDING TO THE INTENT OF THE CONTRACTOR. IT IS TO BE KEPT IN THE CONTRACTOR'S POSSESSION AND NOT TO BE REPRODUCED OR COPIED IN ANY MANNER WITHOUT THE WRITTEN PERMISSION OF PAVARA.

2. ALL DIMENSIONS ARE TO BE MEASURED TO THE CENTERLINE UNLESS OTHERWISE SPECIFIED.

3. DIMENSIONS ARE NOT TO BE SCALED OFF THIS DRAWING.

4. ALL MEASUREMENTS SHALL BE IN METERS.

SWIMMING POOL PIPING INSTALLATION

QUALITY • PRECISION • RELIABILITY

- ✓ EXCAVATION COMPLETED
- ✓ REBAR INSTALLATION COMPLETED
- ✓ POOL PIPING ROUGH-IN COMPLETED
- ✓ STRUCTURAL FRAMEWORK PREPARATION
- ✓ READY FOR CONCRETE CASTING



MAIN CIRCULATION PIPING



SUCTION & RETURN LINES



PLUMBING LAYOUT



STRUCTURAL REINFORCEMENT



ON-SITE INSPECTION



EXPERT
INSTALLATION



EFFICIENT
WATER FLOW



DURABLE
& RELIABLE



BUILT TO LAST
THAILAND QUALITY

POOL CARE THAILAND
YOUR TRUSTED POOL PARTNER

Swimming Pool Piping Installation & Structural Preparation Pool Care Thailand

These photos show the swimming pool construction phase with:

- Main circulation piping installation
- Reinforced steel structure for pool floor and walls
- Suction and return line positioning
- Plumbing layout before concrete pouring
- Structural beam and column reinforcement
- On-site inspection and alignment checking

The blue PVC piping has been installed within the reinforced slab area, ensuring proper hydraulic circulation and system integration before the concrete pour. The steel reinforcement appears well distributed for the pool shell structure, with wall starter bars and beam cages prepared for the next construction stage.

Current construction progress includes:

- ✓ Excavation completed
- ✓ Rebar installation completed
- ✓ Pool piping rough-in completed
- ✓ Structural framework preparation underway
- ✓ Ready for concrete casting phase

Pool Care Thailand specializes in:

- Swimming pool construction
- Pool piping systems
- Filtration and circulation systems
- Overflow and skimmer pools
- Commercial and residential pool projects



POOL CARE
ASIA THAILAND

EXPERTS IN POOL MAINTENANCE & SYSTEMS



095-285-55-33



www.poolcareshailand.com



info@poolcareshailand.com

Pool Care Asia Thailand Phuket

Swimming Pool System



The Clover 77 Pool Villas



PREMIUM QUALITY
Top quality products
from trusted brands



COMPLETE SOLUTION
Swimming pool system
design, supply & installation



PROFESSIONAL TEAM
Experienced engineers
and skilled technicians



RELIABLE SERVICE
After-sales service
and maintenance



CUSTOMER SATISFACTION
Committed to excellence
in every project



SWIMMING POOLS PRODUCTS DELIVERY TO THE SITE THE CLOVER RESIDENCES PHASE 1

VILLA 10, 11, 12, 13, 14, 15, 16, 17, 18, 19, 20, 21, 22, 23, 24, 25



QUALITY PRODUCTS
Trusted brands and premium quality



ON-TIME DELIVERY
Reliable and punctual delivery to site



PROFESSIONAL SERVICE
Expert team and onsite support



CUSTOMER SATISFACTION
Committed to excellent service and support

Swimming Pools Products Type B

Brand Hayward From America



Swimming Pools Products Type C

Brand Emaux From Australia







BANYAN TREE : BEACH CLUB





CyberSync

SMART AUTOMATION — AI CONTROL SYSTEM



AI ENGINE



AUTO
DOSING



SAFE
WATER
QUALITY

DP300-X-PH



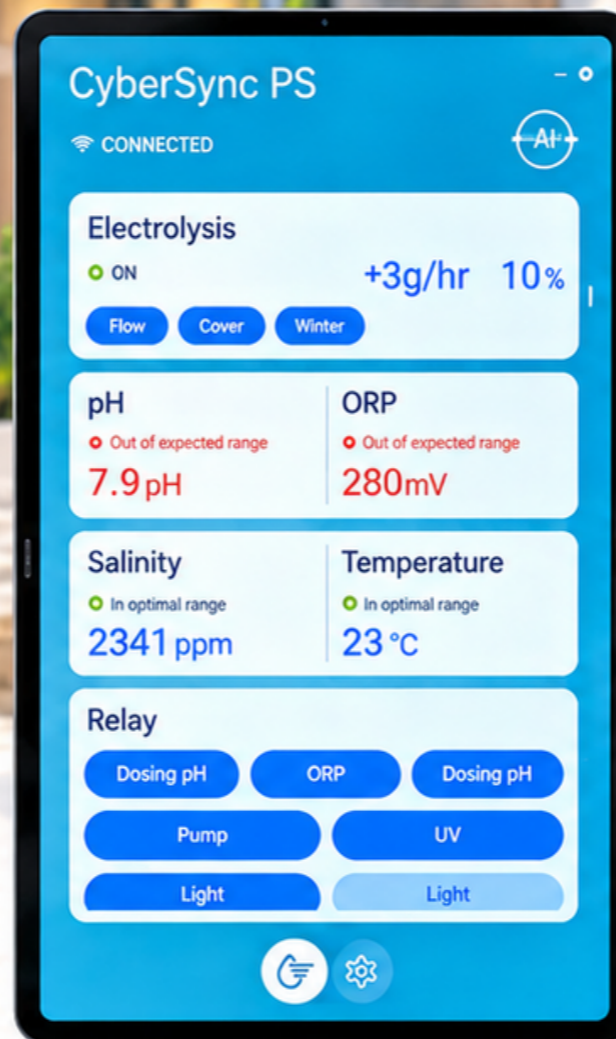
NT-UV87-T0

CS-A20



SWIMMING POOL AI CONTROL SYSTEM

Smart • Safe • Efficient • Connected



AI POWERED

智能 AI 学习与优化
AI learning & optimization



WATER QUALITY

实时监测水质
Real-time water monitoring



AUTOMATIC DOSING

自动投药控制
Precise chemical dosing



ELECTROLYSIS CONTROL

盐氯电解智能控制
Smart salt chlorination



REMOTE ACCESS

远程监控与管理
Remote monitoring & control



ENERGY EFFICIENT

节能环保运行
Energy saving & eco-friendly



REAL-TIME MONITORING

Monitor pH, ORP, Salinity,
Temperature & more
in real time



AUTOMATIC CONTROL

AI-driven automation
for pumps, lights, UV
& dosing systems



WATER SAFETY

Keep your pool water
clean, safe &
crystal clear



EASY TO USE

Intuitive touchscreen
interface for easy
operation



SMART SCHEDULING

Set schedules for
filtration, lighting
& maintenance



DATA & REPORTS

Historical data,
usage reports &
performance insights



ALERT & NOTIFICATION

Instant alerts for
abnormal conditions
& system status



ระบบเกลือที่ชาญฉลาดเพื่อการ จ่ายน้ำแบบไม่หนักหน่วง

สำหรับสระว่ายน้ำในบ้านพักอาศัยหรือสระว่ายน้ำกึ่งพาณิชย์

CyberSync Salt Chlorinator



ระบบบำบัดน้ำในสระว่ายน้ำอัจฉริยะ

เครื่องผลิตคลอรีนด้วยน้ำเกลือไซเบอร์ซิงค์ (CyberSync Salt Chlorinator) เป็นการพัฒนาระบบการทำงานด้วยเกลือปริมาณต่ำ (1200 ppm) ใช้เทคโนโลยีอิเล็กโทรไลซิสขั้นสูงเพื่อให้มีคุณสมบัติเป็นน้ำอ่อนอย่างมาก ระดับปริมาณเกลือต่ำมากจนแทบจะไม่สามารถรู้สึกได้ ช่วยลดการระคายเคืองผิวหนัง ตา (โดยเฉพาะสำหรับผู้ที่เป็นฝ้า) และเส้นผมอย่างมีนัยสำคัญ ผิวจะไม่รู้สึกแห้งตึงหรือเหนียวเหนอะหลังจากว่ายน้ำ ระบบผนวกเข้ากับแอป Smart Life ได้อย่างลงตัวเพื่อการตรวจสอบแบบเรียลไทม์ จึงแน่ใจได้ว่าคุณภาพน้ำอยู่ในสภาพที่เหมาะสมที่สุด ระบบสระน้ำที่ใช้ระบบ IoT ขั้นสูงนี้ช่วยเพิ่มประสิทธิภาพการบำรุงรักษาด้วยอินเทอร์เน็ตที่ทันสมัย ใช้งานง่าย และโปรแกรมป้องกันที่มีประสิทธิภาพ ออกแบบมาสำหรับสภาพแวดล้อมการทำงานที่หลากหลาย

ตัวควบคุมหลัก

จอ LCD แบบสัมผัสขนาดใหญ่ถึง 4.3 นิ้ว

- ใช้แอปควบคุมการทำงาน
- โหมดดูหน้าจอ
- UX & UI ที่ทันสมัย
- รองรับหลายภาษา
- ปรับค่าเอาต์พุต (Output) ได้

ควบคุมได้หลายอุปกรณ์

- บิมน้ำ
- บิมน้ำจ่ายสารเคมี
- ฮีทปั๊ม
- ไฟได้น้ำ
- ระบบ UV
- ฝักคลุมสระ



ดาวน์โหลดแอป 스마트 ไลฟ์
DOWNLOAD
THE APP **SMART LIFE**



GET IT ON
Google Play

Download on the
App Store

E-Power Variable Speed Pump

SAVES UP TO 85% ON ENERGY CONSUMPTION

For large residential pools and water features



Product Features:

1. Permanent Magnet Motor (PMM)
2. Totally Enclosed Fan Cooled (TEFC)
3. 5L Strainer Basket
4. 316 Stainless Steel Shaft
5. 316 Stainless Steel Mechanical Seal
6. 2"/2.5" Union Connection
7. IPX5 Waterproof Standard



Pool & Spa Equipment

SIGNATURE COLLECTION

Product Features



Robust and Reliable Latest Hydraulic Design

Compared to the Emaux EPV range, traditional single-speed pumps run continuously and inefficiently at maximum load incurring high running costs. Reduced speed provides slower water circulation rates and puts less strain on the complete installation such as filter, sanitization and plumbing. It reduces the wear-and-tear factor ending in significant savings for the pool owner.

Energy Saving

Emaux E-Power Variable Speed Pump reduces the energy use of your pool, spa, and water features. Thanks to its higher efficiency, it eliminates over-usage and reduces equipment maintenance costs.

The energy saving is achieved by programming the pump to reach the ideal flow rate schedule. As the pump speed is reduced, the water flow drops. A 50% reduction in speed cuts the flow rate by half, but at the same time reduces the power consumption by up to 85%.



Physical Structure

User-Friendly Controller

Emaux E-Power Variable Speed Pump maximizes the efficiency of your pool filtration system with the aid of a one-touch controller. The presettable direct speed controller enables pool owners to manage their usage with the press of a single button to schedule their water treatment system with piece of mind.



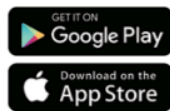
Super Quiet Operation

With the advanced hydraulic design, water moves much more efficiently and the operation is whisper quiet with the E-Power Variable Speed Pump operating at lower speeds. The Permanent Magnet Motor technology eliminates excessive motor noise. E-Power Variable Speed Pump satisfies the most discerning user.

New Connectivity and External Smart Control DOWNLOAD THE APP

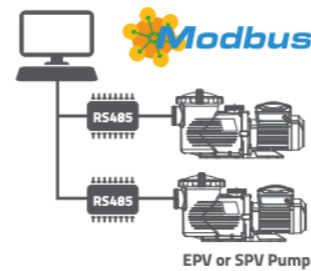
SMART LIFE

NEW



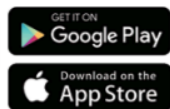
IoT Connection:

An IoT version can be controlled and monitored over an internet connection, enabling users to manage pool functions remotely. This connectivity allows for real-time adjustments, automated scheduling, and enhanced efficiency in maintaining optimal water quality.



Code	Description
E021616	3C 22AWG 7.62M 4PIN RS485 Modbus Harness Cable

EMAUX PUMP



Multi-device connection:

The multi-device connection version allows multiple phones and devices to connect locally, enabling control and monitoring without requiring internet access.

- 1. Transparent Lid**
 - Allows quick inspection
- 2. Ring Lock**
 - Design for easy Maintenance
- 3. O-Ring**
 - Made of Nitrile
 - Provides high resistance
- 4. Union Connections**
 - 2" / 63mm or 2.5" / 75mm



- 8. Basket**
 - Enlarged 5-Litre Strainer
- 9. Pump Body**
 - Glass Filled Acrylonitrile Butadiene Styrene



ProGrid™

Vertical Grid D.E. Filters

**SUPERIOR WATER CLARITY WITH
SIMPLE SERVICE AND MAINTENANCE**



HIGH-IMPACT ELEMENTS. HIGH-QUALITY RESULTS.

ProGrid™ vertical grid D.E. filters offer superior large-capacity performance for pools and spas of all types and sizes. Engineered with high-impact grid elements, they provide up-flow filtration and top-down backwashing for maximum efficiency. They're constructed of a durable, glass-reinforced copolymer for corrosion-free durability, and their service-ease assembly makes accessing internal parts simple.

Heavy-duty, tamper-proof, one-piece clamp provides quick access to internal components without disturbing plumbing connections

Full-size 1.5" integral drain provides fast and complete flushing



Manual air relief purges air from filter

Bulkhead fittings and union locknuts offer simple, durable installation

Inlet diffuser elbow distributes incoming water evenly over all filter elements

SPECIFICATIONS

Filter Type	Vertical Grid Diatomite: 24, 36, 48, 60, 72 ft.² (2.2, 3.3, 4.4, 5.5, 6.6 m²)
Filter Tank	Injection-molded
Filter Elements	Monofilament polypropylene cover fitted over 8 curved, high-impact grids
Control Valve	Injection-Molded Polymer
Performance Range	½ to 3 HP (30 to 150 GPM)

	DIMENSIONS	CONTROL VALVE OPTIONS
Side-Mount	DE2420 – 24" W x 32.5" H (61 cm x 83 cm) DE3620 – 24" W x 34.5" H (61 cm x 88 cm) DE4820 – 24" W x 40.5" H (61 cm x 103 cm) DE6020 – 24" W x 46.5" H (61 cm x 118 cm) DE7220 – 24" W x 52.5" H (61 cm x 133 cm)	SP0710XR50 – SP0715XR50 – 1.5" or 2", 6-position VariFlo® SP0425 – 2" x 2.5", 4 position SelectaFlo™ high efficiency backwash valve SP0740DE – 2", 4-position SelectaFlo™ SP0410X502S – 2", 2-position slide valve May also be plumbed singularly or in series with quick-connect union couplings.

FILTER PERFORMANCE DATA

MODEL NUMBER	EFFECTIVE FILTRATION AREA	DESIGN FLOW RATE*	TURNOVER	
			8 HOURS	10 HOURS
DE2420	24 ft.² / 2.20 m²	48 GPM / 182 LPM	23,040 gal / 87 kl	28,800 gal / 109 kl
DE3620	36 ft.² / 3.30 m²	72 GPM / 272 LPM	34,560 gal / 131 kl	43,200 gal / 164 kl
DE4820	48 ft.² / 4.40 m²	96 GPM / 363 LPM	46,080 gal / 174 kl	57,600 gal / 218 kl
DE6020	60 ft.² / 5.50 m²	120 GPM / 454 LPM	57,600 gal / 218 kl	72,000 gal / 273 kl
DE7220	72 ft.² / 6.70 m²	144 GPM / 545 LPM	69,120 gal / 261 kl	86,400 gal / 327 kl

*Determined by pump size and piping system hydraulics; 2" piping is recommended for flow rates equal to or greater than 90 GPM (341 LPM). Hayward® doesn't recommend flow rates above 150 GPM.

» hayward.com » 1-888-HAYWARD

ProGrid Filters are listed by:

VALVE OPTIONS



» 4-position high efficiency backwash valve



» 2-position slide valve



» 4-or 6- position multiport valve

Pumps » Filters » Heaters » Cleaners » Sanitization » Automation » Lighting » Water Features » White Goods

Hayward, Hayward & Design, the H logo and VariFlo are registered trademarks and ProGrid and SelectaFlo are trademarks of Hayward Industries, Inc. © 2018 Hayward Industries, Inc. All other trademarks not owned by Hayward are the property of their respective owners. Hayward is not in any way affiliated with or endorsed by those third parties.

LITPG18





Pro™ Series SIDE-MOUNT SAND FILTERS

Minimal maintenance
for added convenience.

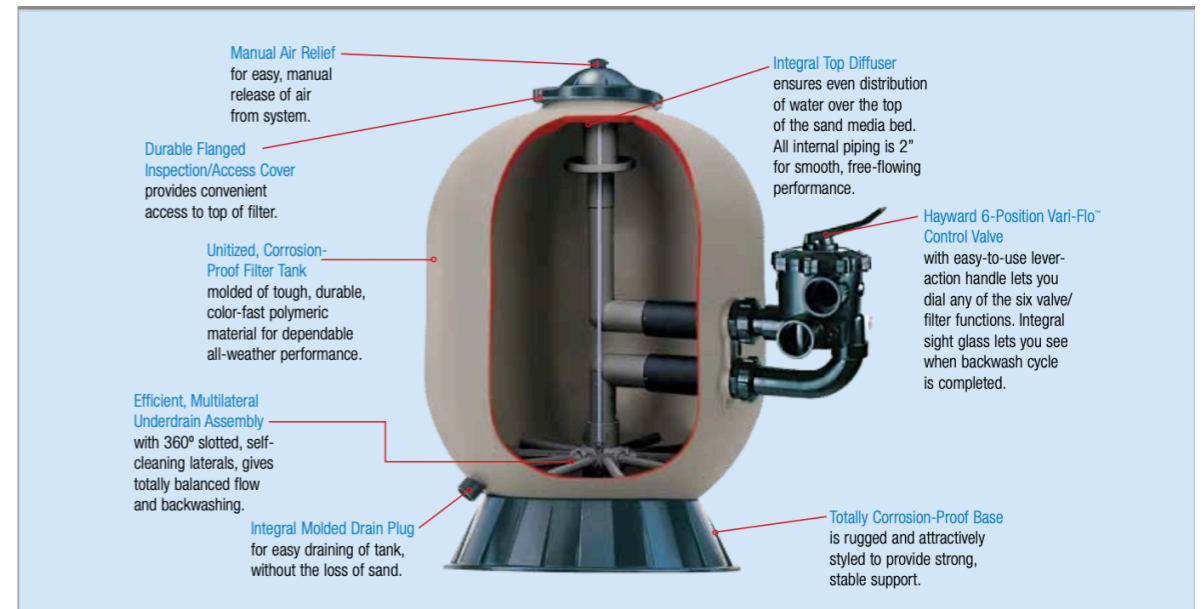
Hayward Pro Series sand filters deliver crystal clear water through advanced pool filter technology for pools of all types and sizes. And, since this sand filter requires minimal care, users will appreciate its added convenience.

The durable housing is molded of corrosion-proof polymeric materials. Additional features include an advanced, self-cleaning lateral system for smooth, efficient flow and totally balanced backwashing. Plus, with a Hayward 6-position Vari-Flo™ control valve, you can quickly dial any of the valve/filter functions for easier operation and maximum efficiency.



FILTERS

Total System: Pumps | Filters | Heating | Cleaners | Sanitization | Automation | Lighting | Safety



SPECIFICATIONS – PRO SERIES SIDE-MOUNT SAND FILTERS	
FILTER TYPE	High-Rate Sand: No. ½ Silica Sand (0.45 mm – 0.55 mm)
FILTER TANK	Molded Polymeric
UNDERDRAIN	360° Slotted Self-Cleaning Slotted Laterals, Precision-Installed in Ball Joint Assembly
CONTROL VALVE	1½" or 2", 6-Position Vari-Flo or 2", 2-Position Slide Valve. May also be plumbed singularly or in series with quick disconnect union couplings (less valve).
SUPPORT BASE	Injection-Molded Polymer
PERFORMANCE RANGE	30 to 120 GPM, 114 to 454 LPM
DIMENSIONS	S210S – 20½" W x 32½" H (52 cm x 82 cm) S244S – 24½" W x 36" H (62 cm x 91 cm) S310S – 30½" W x 40" H (78 cm x 104 cm)

MODEL NUMBER	EFFECTIVE FILTRATION AREA		VALVE	DESIGN FLOW RATE*		TURNOVER				SAND REQUIRED	
	ft.²	m²		GPM	LPM	GALLONS		KILOLITERS		lbs.	kg
						8 hrs.	10 hrs.	8 hrs.	10 hrs.		
S210S	2.20	0.20	1-½" Vari-Flo	44	167	21,120	26,400	80	100	200	91
S244S	3.14	0.30	1-½" Vari-Flo	62	235	29,760	37,200	113	141	300	136
S244SV	3.14	0.30	2" Slide Valve	62	235	29,760	37,200	113	141	300	136
S244SLV	3.14	0.30	Not Included	62	235	29,760	37,200	113	141	300	136
S310S	4.91	0.46	Not Included	98	371	47,040	58,800	178	223	500	227

*Based upon 20 GPM/ft², 814 LPM/m² (Maximum Allowable NSF Rating)

To take a closer look at Hayward Filters, go to www.haywardnet.com or call 1-888-HAYWARD



Hayward is a registered trademark and Pro and Vari-Flo are trademarks of Hayward Industries, Inc. ©2010 Hayward Industries, Inc.



Vari-Flo 6-Position Control Valve

The easy-to-use lever action lets you "dial" any of six valve/filter functions.

Patented Service-Ease Design

with unique folding ball joint design allows lateral assembly to be easily accessed for simple servicing.



LTPROSM10



PUMPS

Super II™

STANDARD EFFICIENT, HIGH-PERFORMANCE PUMP SERIES

Performance for a lifetime.



Power your system with the high-performance Super II pump series from Hayward®. These efficient, large-capacity pumps are built to last and engineered to perform even under the most demanding conditions.

Performance features include full-flow hydraulics that allow greater flow at a lower cost of operation and a housing design that makes it as quiet as it is dependable.

Convenience features include a see-through cover so pool owners know exactly when to empty the extra-large debris basket.

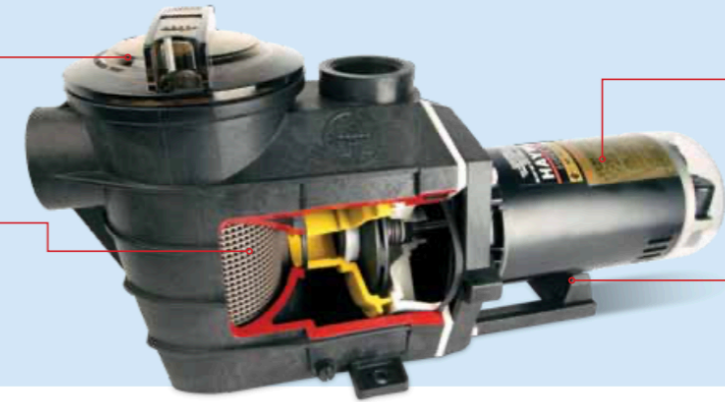
Super II Pumps... the preferred choice.

Save Electricity and Money with high-efficiency single-speed and two-speed models

See-Through Cover so pool owners know exactly when to empty the extra-large debris basket

155 Cubic-Inch Basket has rigid construction including load-extender ribbing for free-flowing operation

Includes Pump Lid Removal Tool



Full-flow hydraulics allow greater flow at a lower cost of operation.

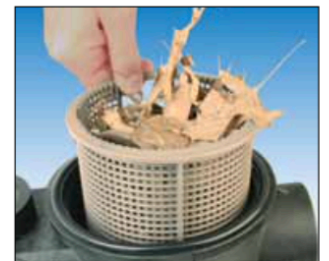
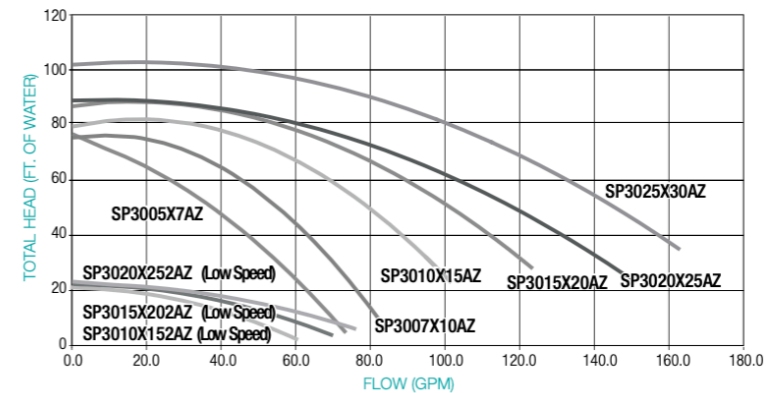
Heavy-Duty, High-Performance Motor features airflow ventilation for quieter, cooler operation.

Uni-Bracket Mounting Base provides stable, stress-free support, plus versatility for any installation requirement. Adapts 48- and 56-frame motors.

Self-Priming (suction lift up to 10' above water level)

OVERALL DIMENSIONS	MODEL	MOTOR POWER					PORT SIZE	DIMENSION "A"		
		Total HP	Rated HP	Service Factor	KW	Voltage		inches	inches	mm
Max Rated Single-Speed										
	SP3005X7AZ	0.75	¾	1.00	0.56	115/230	1 ½	14 ½	359	
	SP3007X10AZ	1.10	1	1.10	0.82	115/230	1 ½	14 ½	368	
	SP3007X10AZ2	1.10	1	1.10	0.82	115/230	2	14 ½	368	
	SP3010X15AZ	1.50	1 ½	1.00	1.12	115/230	2	15 ¾	397	
	SP3015X20AZ	2.00	2	1.00	1.49	115/230	2	16 ¾	422	
	SP3020X25AZ	2.50	2 ½	1.00	1.87	230	2	16 ¾	422	
	SP3025X30AZ	3.45	3	1.15	2.57	230	2	17 ¾	451	
	Max Rated Dual-Speed									
	SP3010X152AZ	1.50	1 ½	1.00	1.12	230	2	14	356	
	SP3015X202AZ	2.00	2	1.00	1.49	230	2	14 ½	368	
SP3020X252AZ	2.50	2 ½	1.00	1.87	230	2	17 ½	445		

SUPER II FLOW VS. TOTAL HEAD



Super II 155-Cubic-Inch Basket is more like a bucket. The Super II Pump Series features impressive leaf-holding capacity. Rigid construction includes load-extender ribbing for free-flowing operation, even under extra-heavy debris loads.

To take a closer look at Hayward Pumps, go to www.haywardpool.com or call 1-888-HAYWARD.



Hayward is a registered trademark and Super II is a trademark of Hayward Industries, Inc. © 2011 Hayward Industries, Inc.

LITSUPIMX11



GOLDLINE®
Aqua Rite®
 SALT CHLORINATION

SANITIZATION



It's amazing what a little salt can do to enhance your pool experience.

Never buy, mix, measure or store old-fashioned chlorine again.

Forget about mixing, measuring or messing around with harsh liquid or tablet chlorine. Say goodbye to red eyes, itchy skin, heavy chemical odors and the bleaching of toys and clothes. Now there's an easier, more efficient and cost-effective way to satisfy 100% of your sanitization needs and enjoy pool water that's always clean, clear and luxuriously soft.

IT'S AMAZING WHAT A LIT

Specifications

Aqua Rite® Control Panel	
Input Power	120/240VAC, 50/60Hz, 2A@120V, 1A@240V
Salinity Range	2,700 – 3,400 ppm
Weight	17 lbs. (7.7 kg)
Enclosure Size	13" W x 11" H x 5" D (330 x 279 x 127 mm)
Weather-Tight Enclosure Construction	Galvanized steel; white enamel finish
Standardization	NSF, UL, CUL
Turbo Cell®	
Maximum Pressure	200 psi (factory-tested)
Pressure Drop (through cell)	1 psi at 100 gpm
Weight	4 lbs. (1.8 kg)
Length (including union tailpieces)	15.75" (400 mm)
Materials	Cell body: ABS, UV inhibited Electrodes: Titanium-, ruthenium-coated
Unions	2 supplied, 2" slip tailpiece
Cell Cable	15 ft. (4.572 m) standard, 25 ft. (7.62 m) available

Optimal Water Chemistry

Chemical	Ideal Levels
Salt	2,700 to 3,400 ppm
Free Chlorine	1.0 to 3.0 ppm
pH	7.2 to 7.6
Cyanuric Acid (Stabilizer)	60 to 80 ppm (80 ppm optimal)
Alkalinity	80 to 120 ppm
Calcium Hardness	200 to 400 ppm
Metals	0 ppm
Saturation Index	-0.2 to 0.2 (0 optimal)

To take a closer look at Hayward Salt Chlorination products, go to www.haywardpool.com or call 1-888-HAYWARD.





SwimPro™ TOP-MOUNT SAND FILTERS

Offering superb spherical pool filter technology with smooth, efficient flow and balanced backwashing.

SwimPro sand filters feature single piece construction of both main tank body and integral base with corrosion-proof, polymeric material. The internal design features a durable innovative under drain assembly that ensures balanced flow. A versatile seven-position control valve offers both easy operation and maximum efficiency.

For crystal clear, sparkling water with minimum care, SwimPro filters set the standard for performance, value and dependability.

FILTERS

Maximum efficiency, easy operation and dependability

Integral Top Diffuser
Ensures even distribution of water over the top of the media bed for perfect surface filtration.

Innovative Under-Drain Assembly
Precision-engineered for balanced flow and backwashing.

Integral Moulded Drain Plug
For easy draining of tank, without the loss of sand.



Flange Clamp Design
Allows 360° rotation of valve to simplify plumbing.

Corrosion-Proof Tank
Moulded of tough, durable, colourfast polymeric material for dependable, all-weather performance with only minimal care.

Unitised Integrated Base
Single piece construction.

SPECIFICATIONS – SwimPro™ HIGH-RATE SAND FILTERS

Filter Type	High-Rate Sand ½ Silica Sand (.45 mm - .55mm), Zeolite or Glass
Filter Tank	Moulded Polymeric
Underdrain	Full Flow innovative box design for Balanced Flow
Control Valve	40mm 7-Position, Top-Mount Vari-Flo™ with Lever-Action Handle
Valve Fastening	Flange Clamp Design
Support Base	Integral with Filter Body



Patented Full-Flow Design

Innovatively designed under drain assembly for smooth, efficient and balanced full flow.



Vari-Flo™ 7-Position Control Valve with easy to use lever-action handle lets you "dial" any of seven valve/filter functions.

PERFORMANCE DATA

Model No.	Area	LPM	Turnover		Sand (kg)	Dimensions w/Valve		Valve (mm)
			4 hours	8 hours		H (mm)	W (mm)	
SwimPro	m ²	LPM						
VL210TC	0.20	132	31 680	63 360	68	750	520	40
VL240TC	0.29	189	45 360	90 720	91	860	600	40
VL270TC	0.34	227	54 480	108 960	136	910	685	40

To take a closer look at Hayward Filters or other Hayward® products, go to www.hayward-pool.com.au or call 1300 POOLS1



PO Box 4384 | Dandenong South, VIC, 3164

Hayward and SwimPro are registered trademarks of Hayward Industries, Inc. © 2013 Hayward Industries, Inc.



30 LTR-0004

Pump SB SERIES SR SERIES

PROVEN LONG-TERM DURABILITY

For residential pool & spa



High Flow Rate

High Efficiency

Ring lock Lid Design

1. 2 inch suction and discharge ports
2. Ring-lock lid eliminates leaks and maximizes suction efficiency
3. Asynchronous, two-poles motor
4. Class insulation: 130(B)
5. IPX5 Waterproof standard
6. Built-in thermal protection
7. Overload protection
8. Available in 50Hz or 60Hz for 220V/380V
9. Special designed unions compatible for both Imperial and Metric standards
10. Testing Pressure (50PSI / 3.5Bar)
11. 316 stainless steel shaft
12. 316 stainless steel mechanical seal



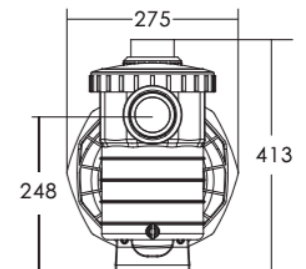
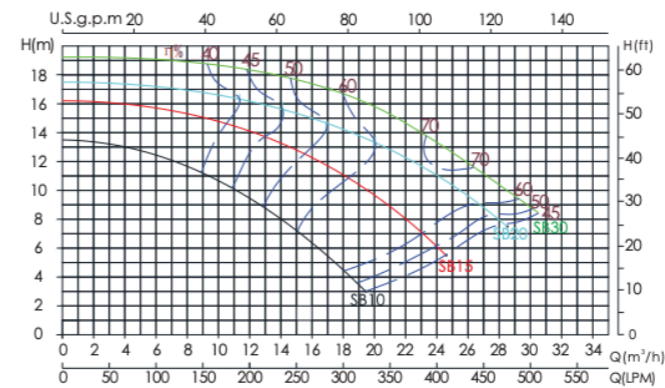
* only SB Series Pump is C-Tick and SASO certified

Pool & Spa Equipment

SB SERIES PUMP

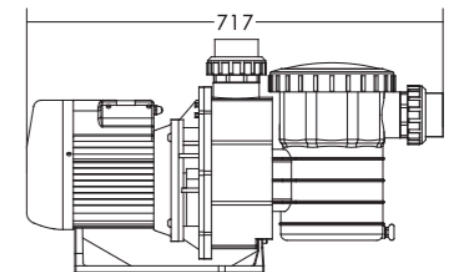


Technical Information:



Product Information and Dimensions:

Model	Input (kW)	Current (AMP)	Noise (dB)	Head (m)					
				6	8	10	12	14	16
SB10	0.97	4.7	67	16.4	14	11	7	--	--
SB15	1.30	5.9	67	24	22	19.5	16	12	2
SB20	1.80	8.2	69	31	28	25.2	22	18	12
SB30	2.18	10.5	69	34	32	28.4	26	23	19.2



Code 220V/50Hz	Code 220V/60Hz	Code 380V/50Hz	Model	Connection Size	Horsepower	Weight(kg)	Capacitance 220V
88021305	88021405	88021605	SB10	2" / 63mm	1.0hp	16.0	25µF
88021307	88021407	88021607	SB15	2" / 63mm	1.5hp	17.0	25µF
88021308	88021408	88021608	SB20	2" / 63mm	2.0hp	23.0	30µF
88021309	88021409	88021609	SB30	2" / 63mm	3.0hp	24.0	35µF

POOL CARE THAILAND

PROJECT MANAGEMENT TEAM

EXPERT TEAM • QUALITY SERVICE • COMPLETE SOLUTIONS



K. Apisak
Duty On-Site Manager

- Site operation supervision
- Daily workforce coordination
- Swimming pool maintenance management
- Safety and quality inspection
- Project progress monitoring



Alice
Project Management

- Project planning and coordination
- Client communication
- Schedule management
- Documentation and reporting
- Team support and administration



K. Is
Swimming Pool
Construction Engineering

- Pool construction engineering
- Technical system installation
- Structural and plumbing supervision
- Equipment setup and testing
- Engineering quality control



K. Puang
Renovate and Repair Manager

- Swimming pool renovation projects
- Repair and maintenance management
- Equipment troubleshooting
- Restoration and upgrade supervision
- Technical repair coordination

OUR SERVICES



SWIMMING POOL CONSTRUCTION

Design and build high quality swimming pools



POOL CLEANING & MAINTENANCE

Professional cleaning, water treatment and equipment care



RENOVATION & REPAIR

Upgrade, repair and restore all types of swimming pools



SECURITY & MONITORING

SECOM CCTV, 24/7 monitoring, safety and security systems

OUR WORK SYSTEM



Site Survey
& Planning



Design &
Engineering



Construction
& Installation



Testing &
Quality Control



Handover &
After Service



WORKING HOURS
9:00 AM – 5:00 PM
Monday – Saturday



MONITORING
24/7
Security & System Monitoring

OUR COMMITMENT

- ✓ Quality work with professional standards
- ✓ Safety first in every project
- ✓ On-time delivery and customer satisfaction
- ✓ Reliable after-sales service



**BUILDING BETTER POOLS
CARING FOR EVERY DETAIL**



02-xxx-xxxx



www.poolcaethailand.com



info@poolcaethailand.com

POOL CARE THAILAND

CCTV SWIMMING POOL & PUMP ROOM SYSTEM MONITORING

24/7 Monitoring • Safety • Reliability • Peace of Mind

Advanced CCTV and smart monitoring systems for swimming pools and pump rooms to ensure smooth operations, safety, and efficiency – 24 hours a day, every day.



CCTV Monitoring 24/7



Pump & Filter System Monitoring



Water Quality Control



Security & Safety Protection



COMPLETE SOLUTION FOR YOUR POOL FACILITY



CCTV MONITORING

Real-time monitoring of all pool areas and pump rooms with high-definition cameras.



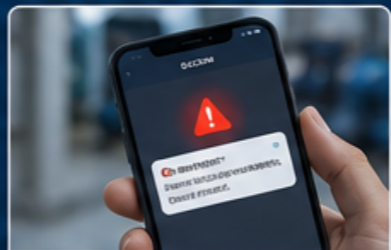
PUMP & FILTER MONITORING

Monitor pump, filter, and water circulation system for optimal performance.



WATER QUALITY CONTROL

Monitor pH, chlorine, temperature, and water quality in real-time to ensure safe swimming.



SMART ALERT SYSTEM

Instant alerts to mobile and control center when unusual activity or system errors occur.



24/7 CONTROL CENTER

Professional team monitoring 24/7 and ready to respond to any situation.



DISPATCH & RESPONSE

Rapid response team ready to inspect and resolve issues on-site.



OUR BENEFITS

- ✓ Reduce downtime and maintenance costs
- ✓ Improve safety and security
- ✓ Real-time monitoring from anywhere
- ✓ Increase efficiency and extend equipment life



WE CARE FOR YOUR POOL AS OUR OWN

CONTACT US

POOL CARE ASIA (THAILAND)

Pool Care Asia (Thailand)
Company Limited (สำนักงานใหญ่)
12/127 M.3 Wichit, Muang, Phuket 83000

บริษัท พูล แคร์ เอเชีย (ไทยแลนด์) จำกัด (สำนักงานใหญ่)
12/127 หมู่ 3 ถนน เจ้าฟ้าตะวันตก ตำบลวิชิต
อำเภอเมือง จังหวัดภูเก็ต 83000 ประเทศไทย



Call Line WhatsApp
(+ 66) 095 285 55 33



www.poolcaethailand.com



Email : contact.poolcaethailand@gmail.com



Pool Care
Thailand
— A S I A —



Reliable Service
Trusted by customers



Professional Team
Experienced & skilled



Quality Care
For your pool, always