



SWIMMING POOL BIG CLEANING

-  DEEP CLEANING & SCRUBBING
 -  WATER LINE CLEANING
 -  FILTER SYSTEM CHECK
 -  DEBRIS REMOVAL
- CLEAN POOL • HEALTHY WATER • HAPPY SWIMMERS
We care your pool

Date 29 May 2026 - Date 5 June 2026

Every pools will be close the system


SURGE TANK DRAIN OUT USING SUBMERSIBLE PUMP

PROBLEM / OVERVIEW

We will empty every pool surge tank using submersible pump suction and drain out.

✗ NOT RECOMMENDED

Normally we use the main system to drain out, but the multiport valve of Hayward DE Filter cannot use and turn on full suction.




HAYWARD DE FILTER MULTIPORT VALVE

CANNOT USE FOR FULL SUCTION DRAIN OUT

The multiport valve is designed for normal filtration and backwash operation only. Full suction may cause damage to the valve and reduce system performance.



✗ DO NOT USE FOR FULL SUCTION

EQUIPMENT USED

Submersible Pump

- Heavy duty
- Suitable for dirty water
- With float switch
- Discharge by hose to drainage point








DRAIN OUT PROCEDURE

- 1 ISOLATE SURGE TANK** - A hand turns a red valve handle to isolate the surge tank.
- 2 INSTALL SUBMERSIBLE PUMP** - A worker in a hard hat and safety vest installs the submersible pump inside the surge tank.
- 3 START PUMP DRAIN OUT** - The submersible pump is running, and water is being pumped out through the hose.
- 4 PUMP UNTIL TANK IS EMPTY** - The surge tank is now empty, and the pump is still running.
- 5 CLEAN TANK AFTER DRAIN OUT** - A worker is cleaning the interior of the empty surge tank with a broom.

NOTES

- Use submersible pump for safe and efficient drain out.
- Ensure pump discharge to proper drainage point.
- Remove remaining sludge and debris after drain out.
- Follow safety procedures during operation.

BENEFITS

-  **SAFE OPERATION**
-  **FASTER DRAIN OUT**
-  **PROTECT EQUIPMENT**
-  **PREVENT DAMAGE TO MULTI-PORT VALVE**
-  **PREPARE TANK FOR MAINTENANCE**

IMPORTANT

DO NOT USE MAIN SYSTEM FULL SUCTION TO DRAIN OUT SURGE TANK.

SNAKE (RODDING) WORK – SUCTION PIPE LINE

IN 7 PUMP ROOM

WHAT IS SNAKE (RODDING) WORK?

Snake (Rodding) is a plumbing tool used to clear blockages inside pipes. A flexible steel cable is inserted into the pipe and rotated to break up, cut through, or pull out obstruction such as sludge, debris, sand, leaves, and other foreign materials.



PURPOSE

- ✓ Clear blockage, sludge, and debris in the suction pipe line
- ✓ Restore full flow and suction performance
- ✓ Prevent cavitation, low suction, and pump damage
- ✓ Ensure stable operation of all pumps in 7 pump room

SNAKE (RODDING) MACHINE & TOOLS



IMPORTANT



DO NOT USE MAIN SYSTEM FULL SUCTION TO CLEAR THE SUCTION LINE.
Use rodding machine only.

SNAKE (RODDING) PROCEDURE – SUCTION PIPE LINE

1 ISOLATE & PREPARE



Close suction valve.
Lock out all related pump.
Ensure safe access.

2 REMOVE STRAINER



Remove strainer cover or clean-out lid for suction pipe access.

3 INSERT SNAKE CABLE



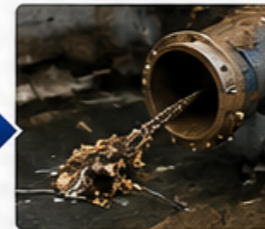
Insert the steel snake cable into the suction pipe line slowly.

4 RODDING & PUSH



Push and rotate the snake cable slowly to break blockage.

5 PULL OUT DEBRIS



Pull out the cable and remove sludge, debris, and foreign materials.

6 FLUSH THE LINE



Flush the line using clean water until the discharge is clear.

7 CHECK FLOW



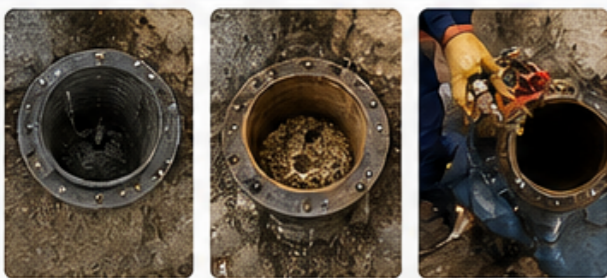
Check suction flow and ensure no more blockage inside the pipe.

8 REASSEMBLE & TEST



Reinstall strainer cover. Open valve and test pump operation.

EXAMPLES OF ACCESS POINTS



Strainer Basket Clean-out Opening Valve Opening

SIGNS OF BLOCKAGE

- ✗ Low pump suction / low flow
- ✗ Pump noisy / cavitation
- ✗ Air in the system
- ✗ Long priming time
- ✗ Pressure drop at suction line
- ✗ Frequent pump tripping

BENEFITS

- ✓ Restore full suction and flow
- ✓ Protect pump from damage
- ✓ Improve pump efficiency
- ✓ Extend equipment life
- ✓ Reduce maintenance cost
- ✓ Prevent system breakdown

WORK SAFETY



NOTES

- Regular rodding of suction pipe line prevents blockage, reduces pump load, and ensures stable operation of all 7 pumps.
- Recommended frequency: Every 3-6 months or as needed (depending on site condition).

7 PUMP ROOM SUCTION LINE



P1 P2 P3 P4 P5 P6 P7

✓ Using snake (rodding) is the most effective method to clear suction pipe line without damaging the system.



SURGE TANK PIPING MODIFICATION

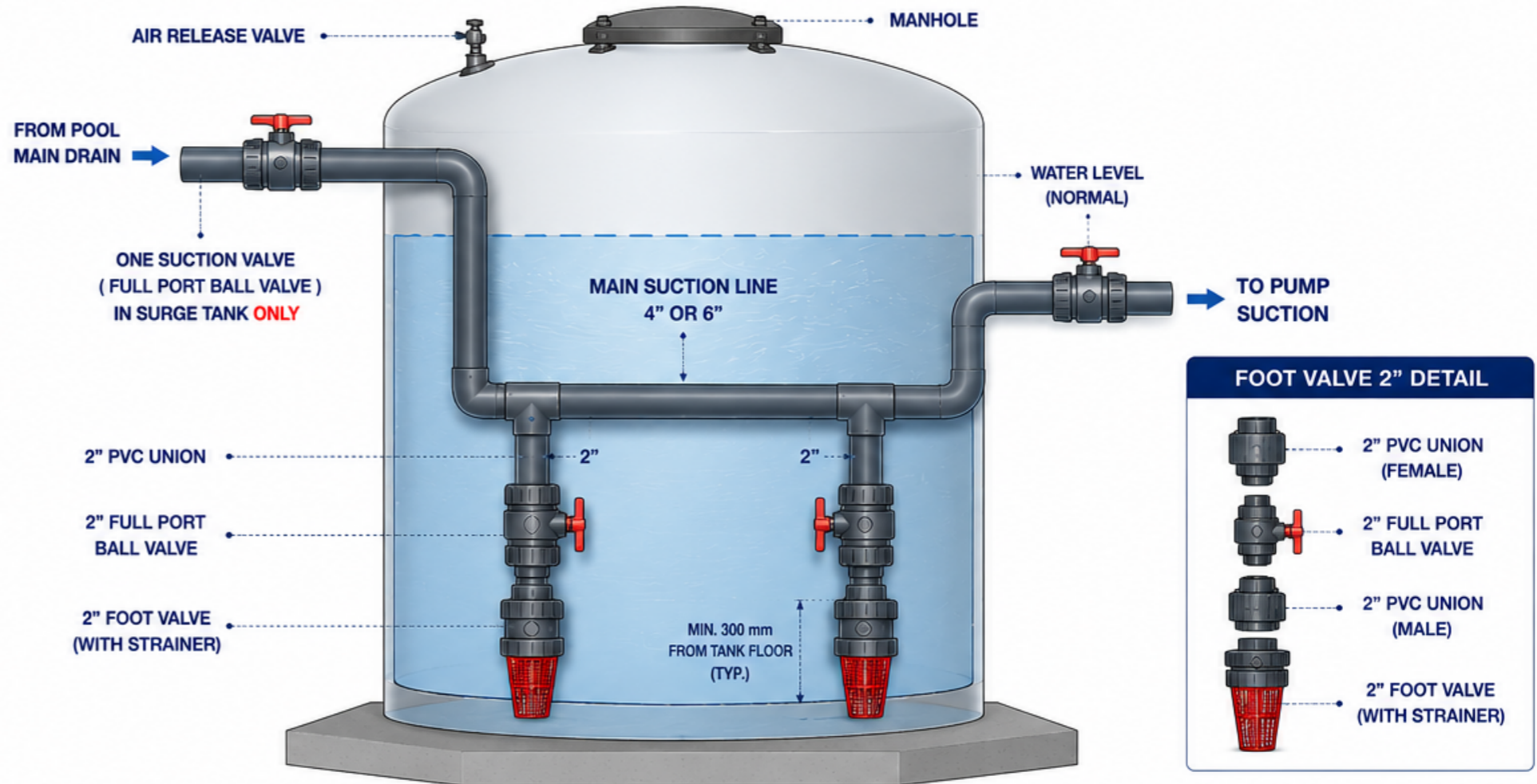
IMPROVE SUCTION CONTROL & PREVENT BACKFLOW / LOSS OF PRIME

OVERVIEW

The surge tanks are oversized compared with the system requirement. Because the main suction lines inside the tanks are 4" and 6", we need to install 2" foot valves, 2 units for each surge tank to control suction and prevent backflow / loss of prime.

BENEFITS OF FOOT VALVES

- ✓ Maintain water in the suction line
- ✓ Prevent backflow to the surge tank
- ✓ Support pump priming
- ✓ Reduce air entering the suction system
- ✓ Improve stable operation of the filtration pump
- ✓ Extend equipment life



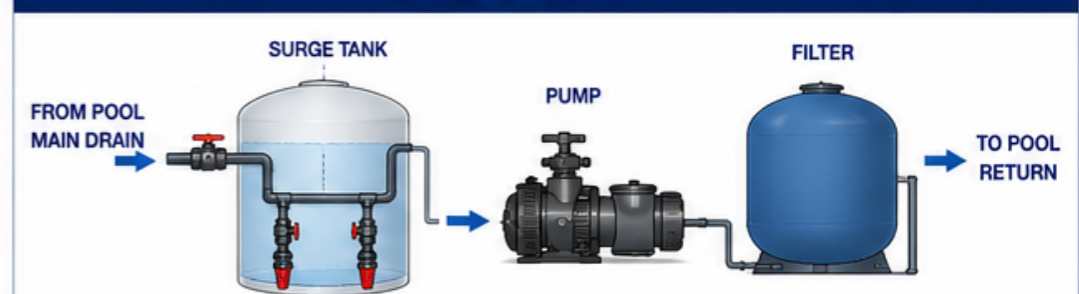
INSTALLATION DETAILS (EACH SURGE TANK)

Each Surge Tank	2" Foot Valve x 2 Units
Main Suction Pipe (Inside Tank)	4" or 6" Line
Suction Valve in Tank	1 Unit (Full Port Ball Valve Only)
Foot Valve Size	2" (With Strainer)
Material	UPVC / CPVC
Installation	Vertical, Accessible for Maintenance

NOTES

- Install foot valves vertically.
- Use true union for easy maintenance.
- Ensure all connections are leak proof.
- Keep foot valve above tank floor (minimum 300 mm).
- Follow manufacturer's installation guideline.

TYPICAL SYSTEM FLOW



! Proper installation of foot valves helps protect your pump and ensures long-term, reliable operation.

POOL GUTTER CLEANING PROCEDURE

WHEN GUTTER GRATING CANNOT BE FULLY LIFTED DUE TO DAMAGE

SITUATION

After inspection, the gutter grating is found to be rotten and damaged. All grating stones cannot be lifted as it may break further due to heavy load and cause more damage.



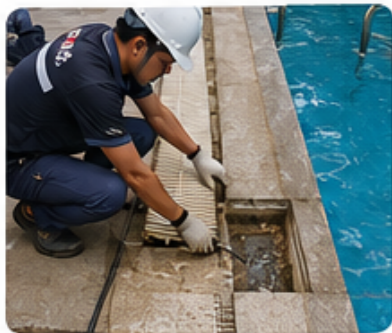
CLEANING METHOD

We will open the gutter at the pool's head (start point) and pull the gutter grating out approximately 10 inches. Then use a high pressure water jet to flush under the grating and wash all debris, dirt, leaves, and sludge from the gutter into the surge tank.



STEP BY STEP PROCEDURE

1 OPEN AT POOL HEAD



Remove the grating cover at the pool head to create an access opening.

2 PULL OUT GRATING



Pull the gutter grating out approximately 10 inches. Do not remove all grating to avoid further damage.

3 INSERT HIGH PRESSURE HOSE



Insert the high pressure hose under the grating.

4 HIGH PRESSURE FLUSHING



Use high pressure water jet to flush under the grating and remove all debris, dirt, leaves, and sludge.

5 WATER FLOW TO TANK



All waste and dirty water will flow through the gutter and into the surge tank.

6 REPOSITION GRATING



After cleaning, reposition the grating back to its original position carefully.

ADVANTAGES

- ✓ Effective cleaning without damaging the gutter grating
- ✓ Remove sludge, dirt, leaves, and debris from the gutter
- ✓ Prevent clogging and overflow problems
- ✓ Maintain proper water circulation

RECOMMENDED EQUIPMENT



High Pressure Washer

High Pressure Hose

Jet Nozzle

SAFETY NOTES

- ⚠ Wear proper PPE (gloves, boots, goggles).
- ⚠ Ensure the high pressure equipment is in good condition.
- ⚠ Do not stand directly in front of the water jet.
- ⚠ Ensure electrical safety in wet areas.

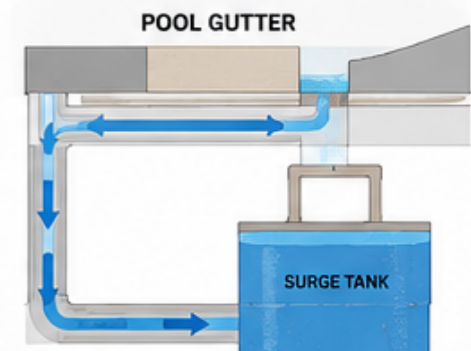
IMPORTANT NOTES

Do not attempt to lift all grating stone as it may cause further damage to the rotten and weak grating.

Always clean from the head (start point) and flush towards the surge tank.



WATER FLOW PATH



✓ This method ensures safe, effective, and non-destructive cleaning of the pool gutter system.



บริษัท พูล แคร์ เอเชีย (ไทยแลนด์) จำกัด (สำนักงานใหญ่) (สำนักงานใหญ่)
12/127 หมู่ 3 ถนน เจ้าฟ้าตะวันตก ตำบลวิเชียร อำเภอเมือง จังหวัดภูเก็ต 83000
ประเทศไทย

เลขประจำตัวผู้เสียภาษี 0835567030391

โทร. 0931542595

เบอร์มือถือ 0952855533

www.poolcarethailand.com

ลูกค้า

นิติบุคคลอาคารชุดบ้านไม้ขาว ภูเก็ต

นิติบุคคลอาคารชุดบ้านไม้ขาว ภูเก็ต

0994001042535

8 หมู่ที่ 3 ตำบลไม้ขาว

อำเภอถลาง จังหวัดภูเก็ต 83110

0630799254,0766828556-8

Email pm-bmk@plus.co.th 83110

เลขประจำตัวผู้เสียภาษี 0994001042535

ใบเสนอราคา

เลขที่ QT202605280001
วันที่ 28/05/2026
ผู้ขาย Tuanusanee Tonitae

ชื่องาน Vacuum valve for main system

#	รายละเอียด	จำนวน	ราคาต่อหน่วย	ยอดรวม
1	Foot Valve 2" CEPEX ADD MORE 4 UNITS	4	7,892.00	31,568.00

รวมเป็นเงิน 31,568.00 บาท

ภาษีมูลค่าเพิ่ม 7% 2,209.76 บาท

จำนวนเงินรวมทั้งสิ้น 33,777.76 บาท

(สามหมื่นสามพันเจ็ดร้อยเจ็ดสิบบาทเจ็ดสิบกสตางค์)



บริษัท พูล แคร์ เอเชีย (ไทยแลนด์) จำกัด (สำนักงานใหญ่) (สำนักงานใหญ่)
 12/127 หมู่ 3 ถนน เจ้าฟ้าตะวันตก ตำบลวิจิตร อำเภอเมือง จังหวัดภูเก็ต 83000
 ประเทศไทย
 เลขประจำตัวผู้เสียภาษี 0835567030391
 โทร. 0931542595
 เบอร์มือถือ 0952855533
 www.poolcarethailand.com

ลูกค้า

นิติบุคคลอาคารชุดบ้านไม้ขาว ภูเก็ต
 นิติบุคคลอาคารชุดบ้านไม้ขาว ภูเก็ต
 0994001042535
 8 หมู่ที่ 3 ตำบลไม้ขาว
 อำเภอถลาง จังหวัดภูเก็ต 83110
 0630799254,0766828556-8
 Email pm-bmk@plus.co.th 83110
 เลขประจำตัวผู้เสียภาษี 0994001042535

ใบวางบิล ต้นฉบับ

เลขที่ BL202605280001
 วันที่ 28/05/2026
 ครบกำหนด 28/05/2026
 ผู้ขาย Tuanusanee Tonitae
 อ้างอิง QT202605280001

ชื่องาน Vacuum valve for main system

#	รายละเอียด	จำนวน	ราคาต่อหน่วย	ยอดรวม
1	Foot Valve 2" CEPEX ADD MORE 4 UNITS	4	7,892.00	31,568.00

รวมเป็นเงิน 31,568.00 บาท
 ภาษีมูลค่าเพิ่ม 7% 2,209.76 บาท
 จำนวนเงินรวมทั้งสิ้น 33,777.76 บาท

(สามหมื่นสามพันเจ็ดร้อยเจ็ดสิบบาทเจ็ดสิบกบาทเจ็ดสิบกสตางค์)

CONTACT US

POOL CARE ASIA (THAILAND)

Pool Care Asia (Thailand)
Company Limited (สำนักงานใหญ่)
12/127 M.3 Wichit, Muang, Phuket 83000

บริษัท พูล แคร่ เอเชีย (ไทยแลนด์) จำกัด (สำนักงานใหญ่)
12/127 หมู่ 3 ถนน เจ้าฟ้าตะวันตก ตำบลวิชิต
อำเภอเมือง จังหวัดภูเก็ต 83000 ประเทศไทย



Call Line WhatsApp
(+ 66) 095 285 55 33



www.poolcarethailand.com



Email : contact.poolcarethailand@gmail.com



Pool Care
Thailand
— A S I A —



Reliable Service
Trusted by customers



Professional Team
Experienced & skilled



Quality Care
For your pool, always